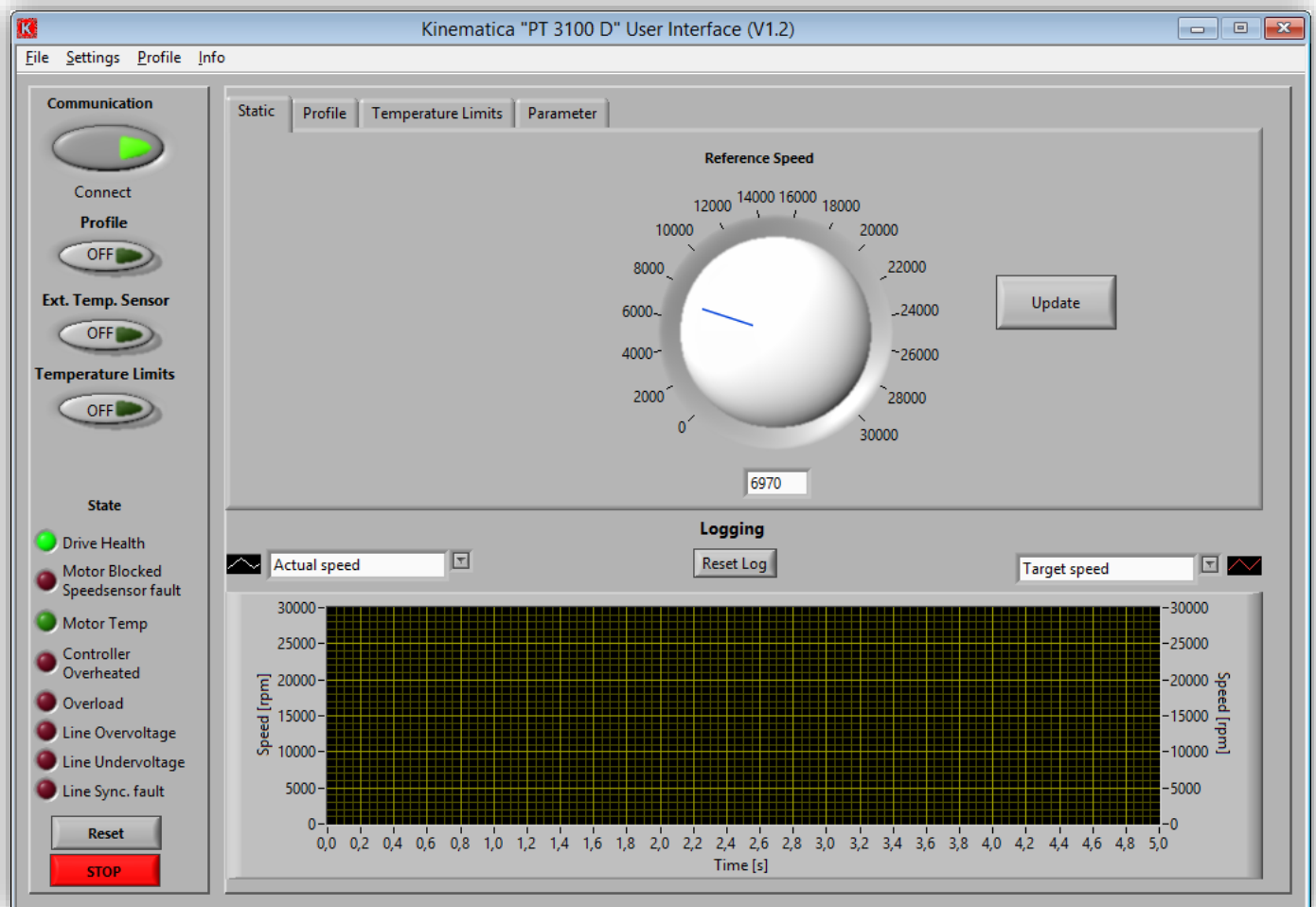




KINEMATICA

Homogenizing perfected.

POLYTRON®



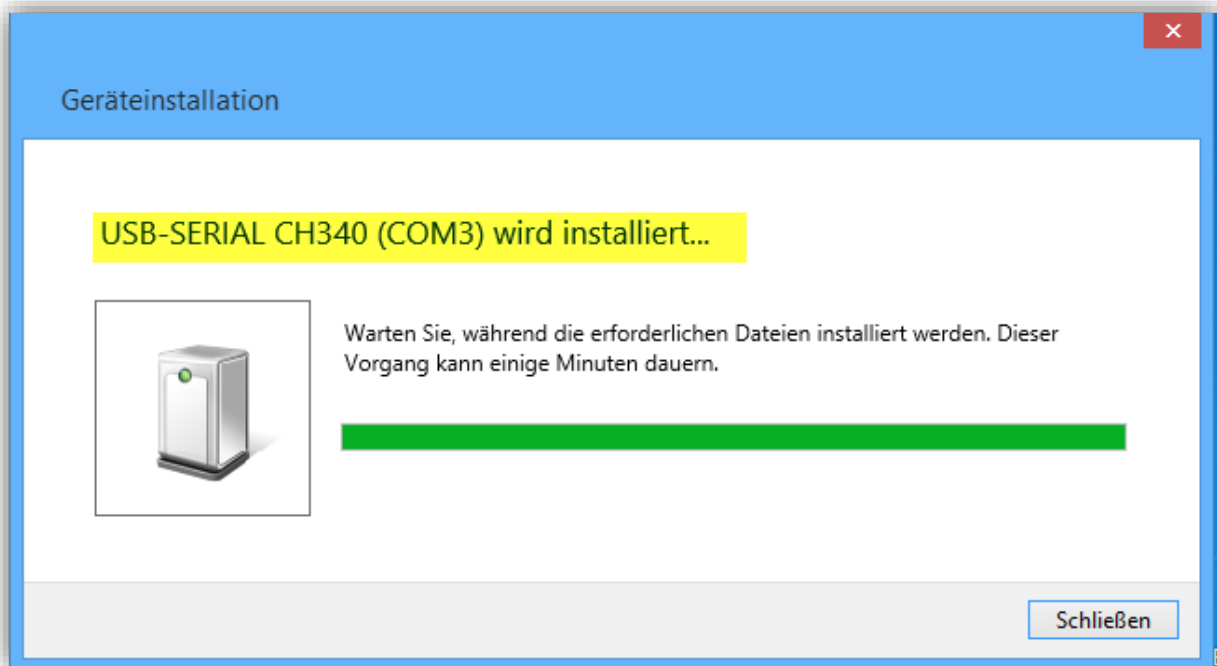
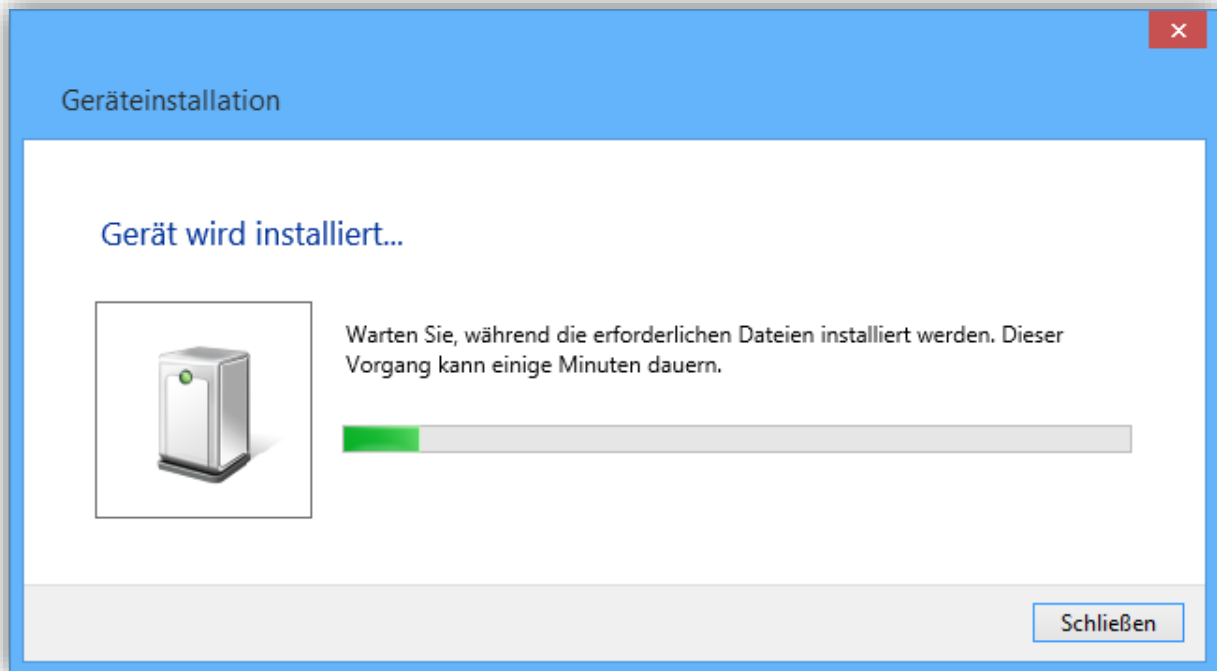
USER INTERFACE WITH WINDOWS® 8.1 Installation Instructions



INSTALLATION INSTRUCTIONS

System	POLYTRON®		
Type	Windows 8.1 User Interface		
Version	2.0 / 01/07/2018		
Page	2	of	15

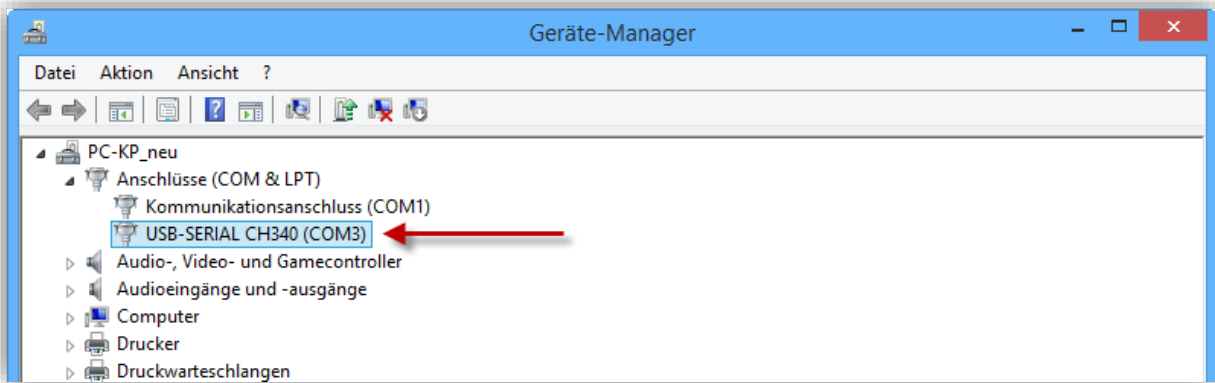
1. Connect the USB cable and the device will be installed with **plug and play** drivers.



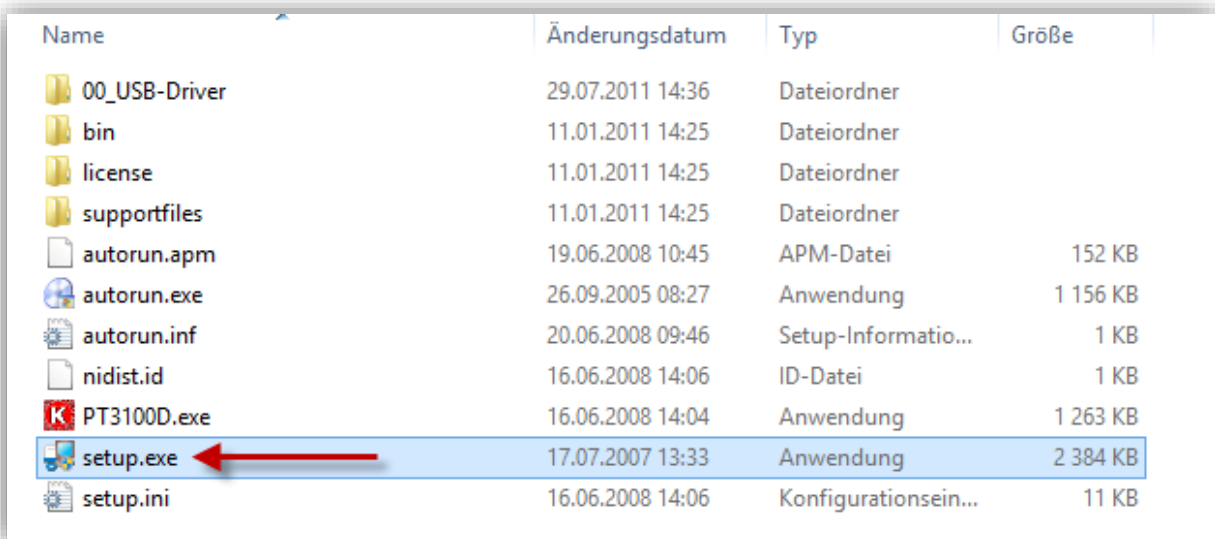
INSTALLATION INSTRUCTIONS

System	POLYTRON®		
Type	Windows 8.1 User Interface		
Version	2.0 / 01/07/2018		
Page	3	of	15

- Go to **Control Panel > Device Manager** to check whether the drivers have been correctly installed and what port number was assigned to the device.



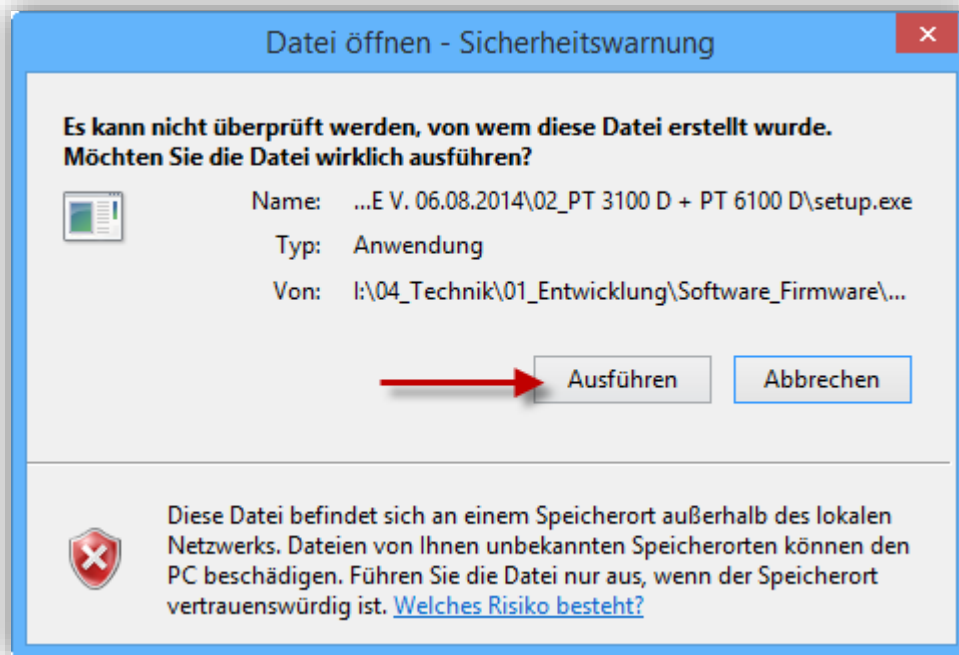
- Run **setup.exe** to start installing the software.



INSTALLATION INSTRUCTIONS

System	POLYTRON®		
Type	Windows 8.1 User Interface		
Version	2.0 / 01/07/2018		
Page	4	of	15

4. Install the software in the specified directory.



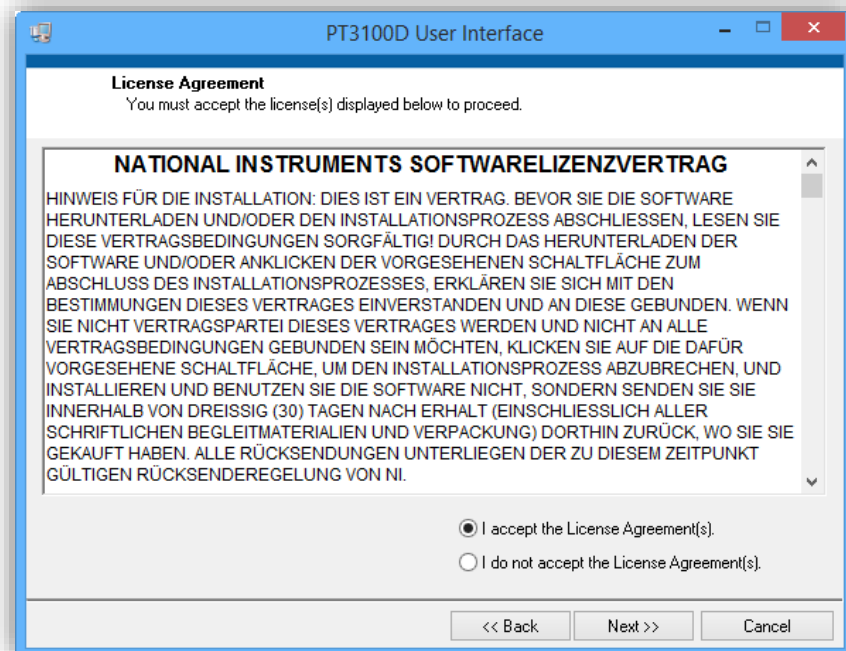
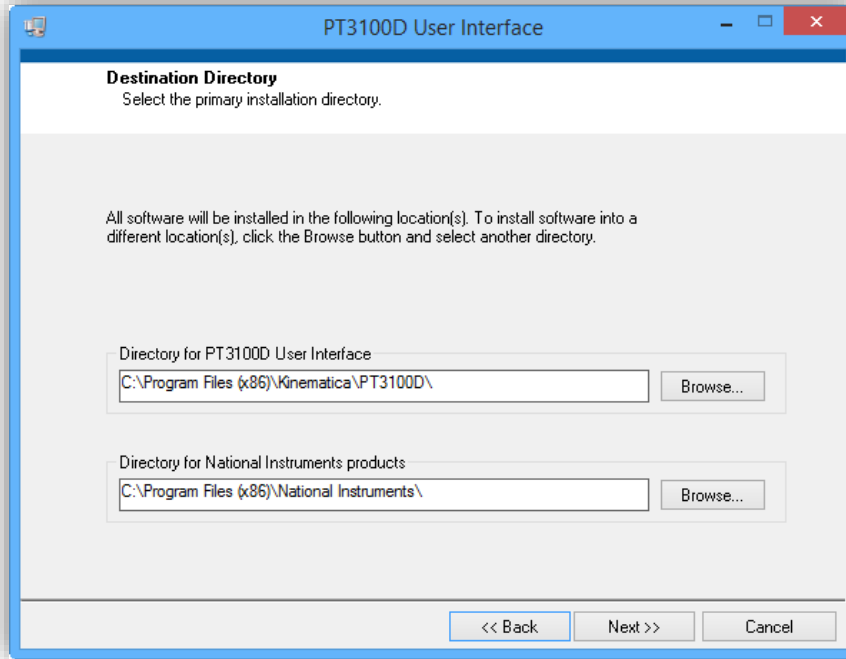


KINEMATICA

Homogenizing perfected.

INSTALLATION INSTRUCTIONS

System	POLYTRON®		
Type	Windows 8.1 User Interface		
Version	2.0 / 01/07/2018		
Page	5	of	15



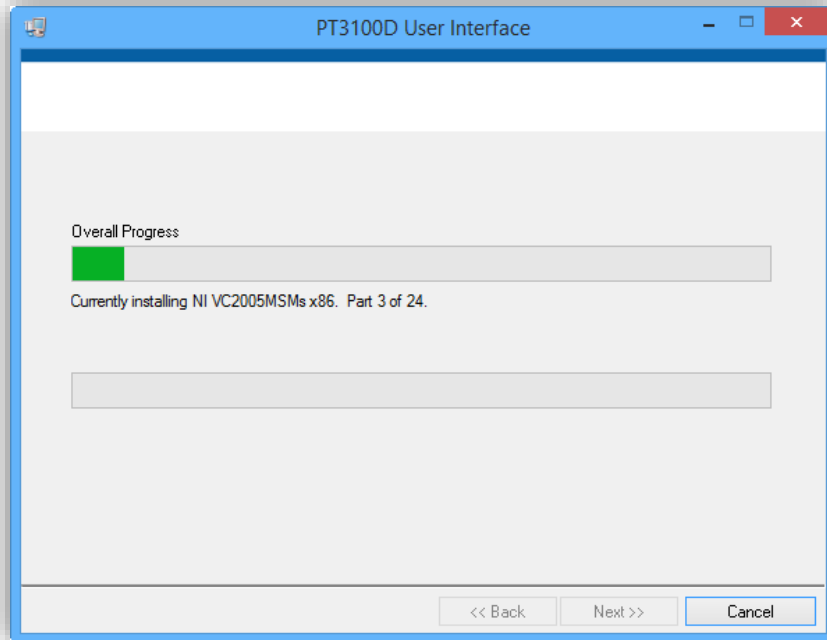
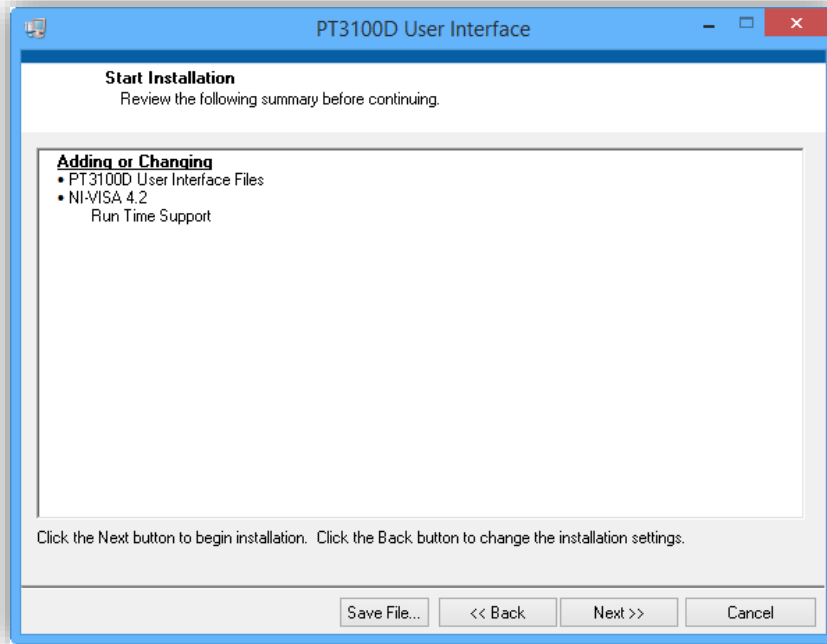


KINEMATICA

Homogenizing perfected.

INSTALLATION INSTRUCTIONS

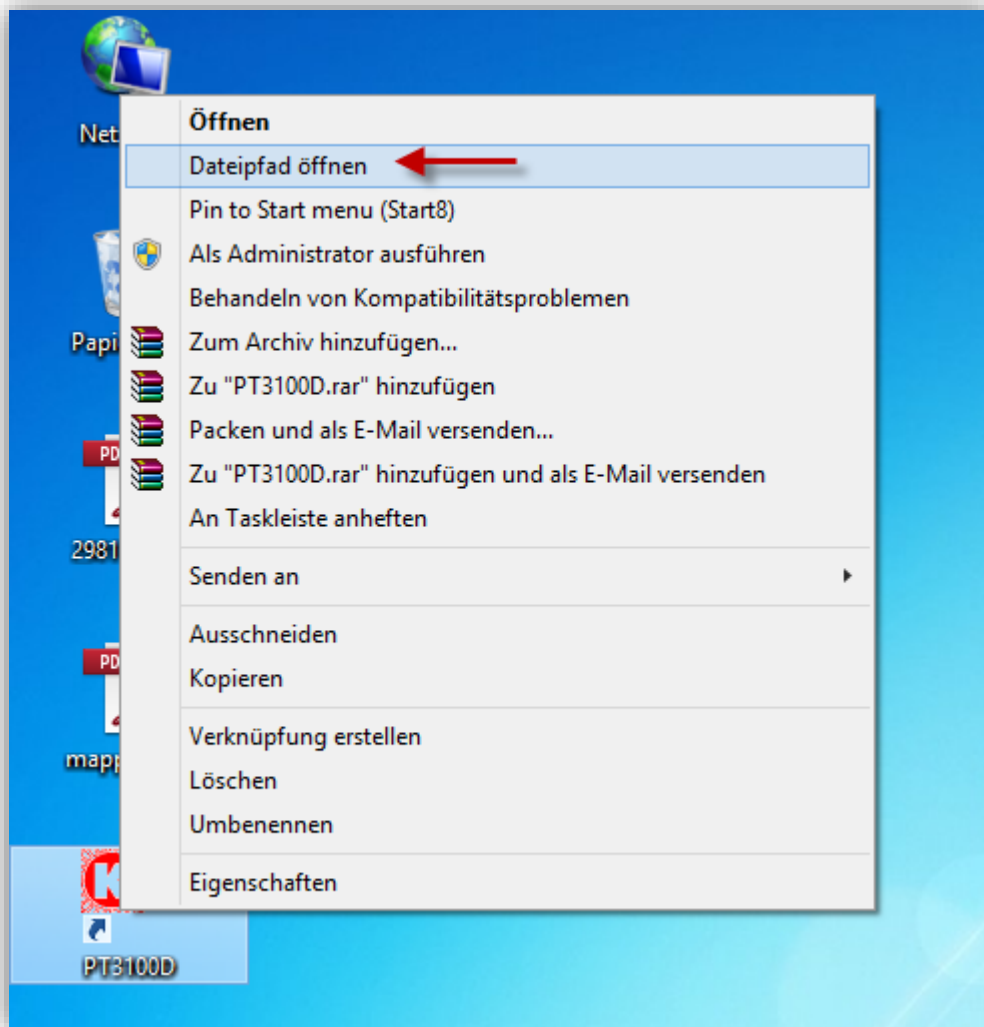
System	POLYTRON®		
Type	Windows 8.1 User Interface		
Version	2.0 / 01/07/2018		
Page	6	of	15



INSTALLATION INSTRUCTIONS

System	POLYTRON®		
Type	Windows 8.1 User Interface		
Version	2.0 / 01/07/2018		
Page	7	of	15

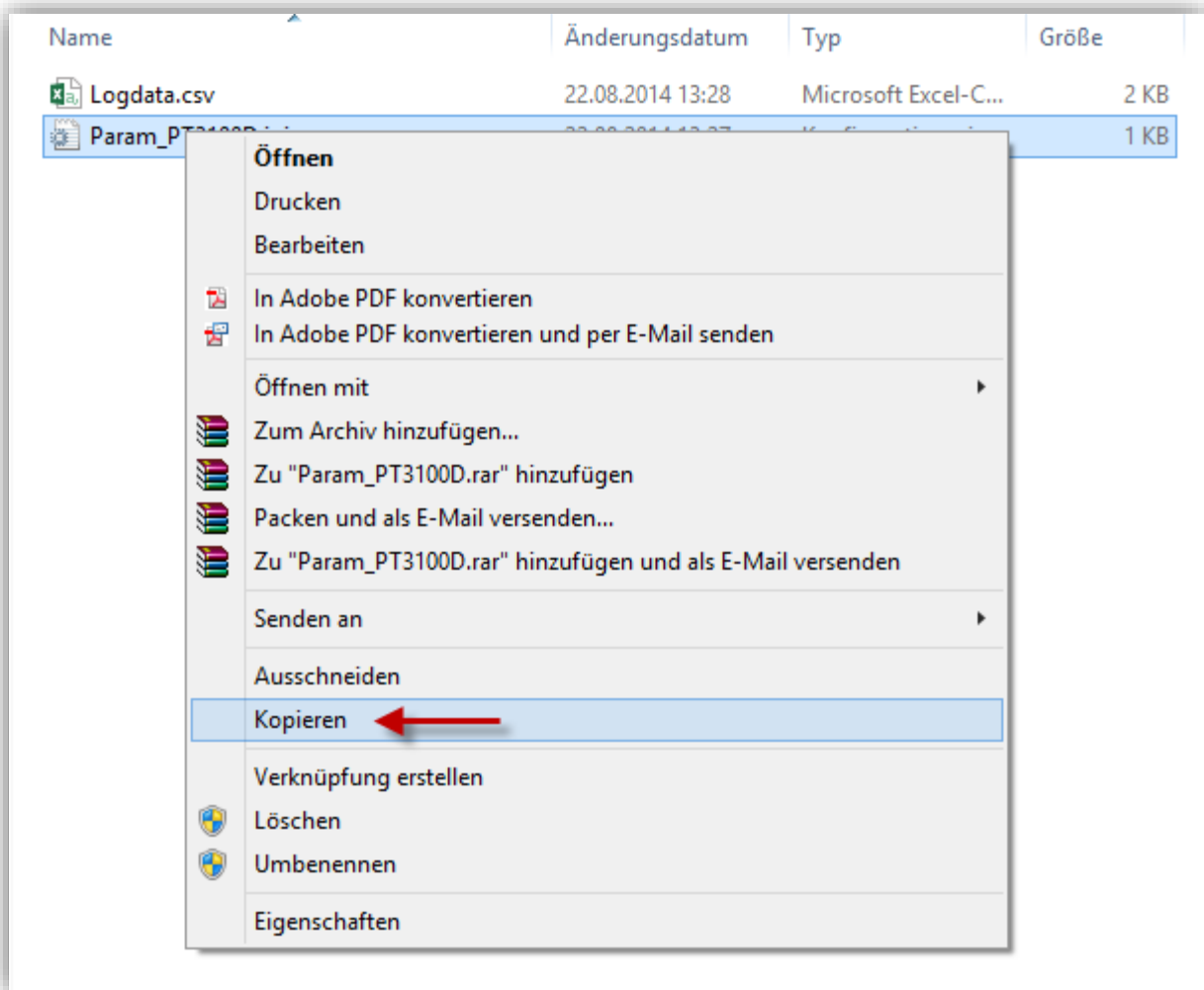
- Restart the computer.
- You should now see a shortcut on your desktop to the **PT3100D** software from Kinematica.
- Right-click on the shortcut and select "**Open file location.**"



INSTALLATION INSTRUCTIONS

System	POLYTRON®		
Type	Windows 8.1 User Interface		
Version	2.0 / 01/07/2018		
Page	8	of	15

- Go to the "**data**" folder and right-click the file named **Param_PT3100D.ini**, choose Copy and then paste it onto the **desktop**. Do not close the directory window; just minimize it because you will need it again.



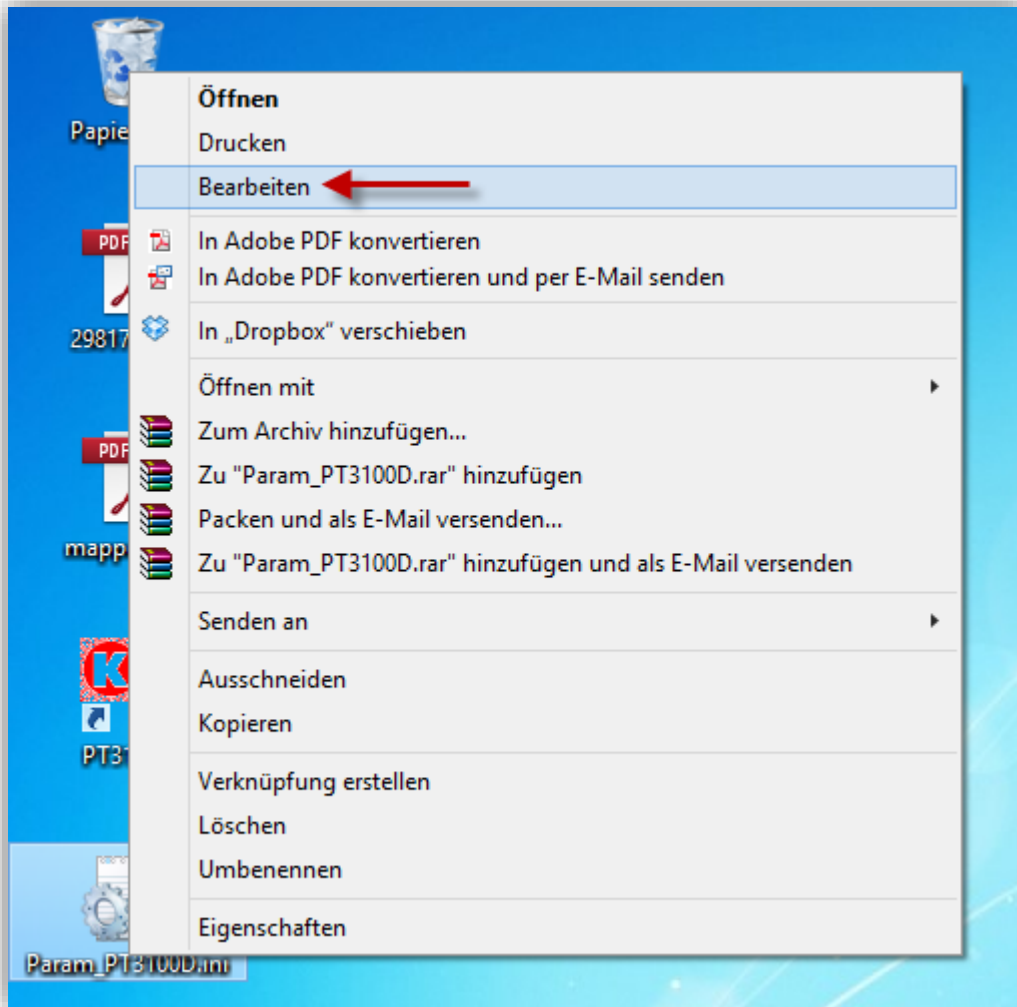
INSTALLATION INSTRUCTIONS

System	POLYTRON®		
Type	Windows 8.1 User Interface		
Version	2.0 / 01/07/2018		
Page	9	of	15



9. Right-click **Param_PT3100D.ini** on the desktop and select "Edit."

System	POLYTRON®		
Type	Windows 8.1 User Interface		
Version	2.0 / 01/07/2018		
Page	10	of	15

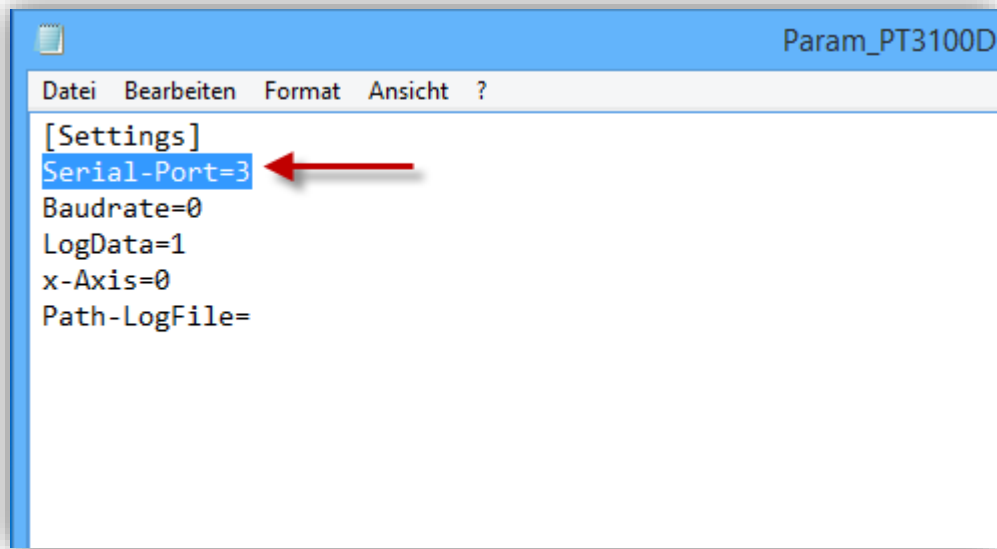


10. Enter the port number that was assigned to the device in Device Manager.



INSTALLATION INSTRUCTIONS

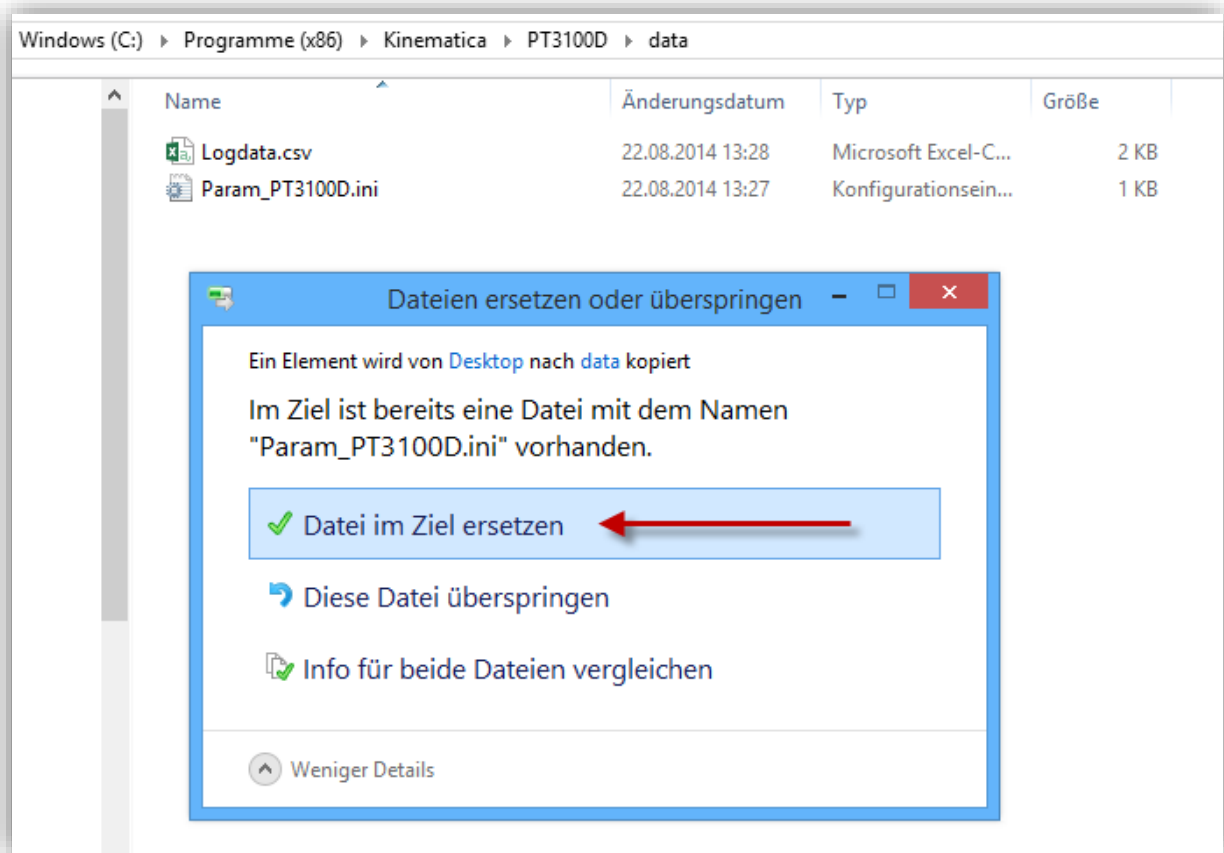
System	POLYTRON®		
Type	Windows 8.1 User Interface		
Version	2.0 / 01/07/2018		
Page	11	of	15



11. Click on File > Save and then close the editor window.
12. Right-click the **Param_PT3100D.ini** file on the desktop and go back to the original directory (reopen the window minimized in step 7) and paste it back into the same folder as before (Replace file in target). Then close all the windows and return to the desktop.

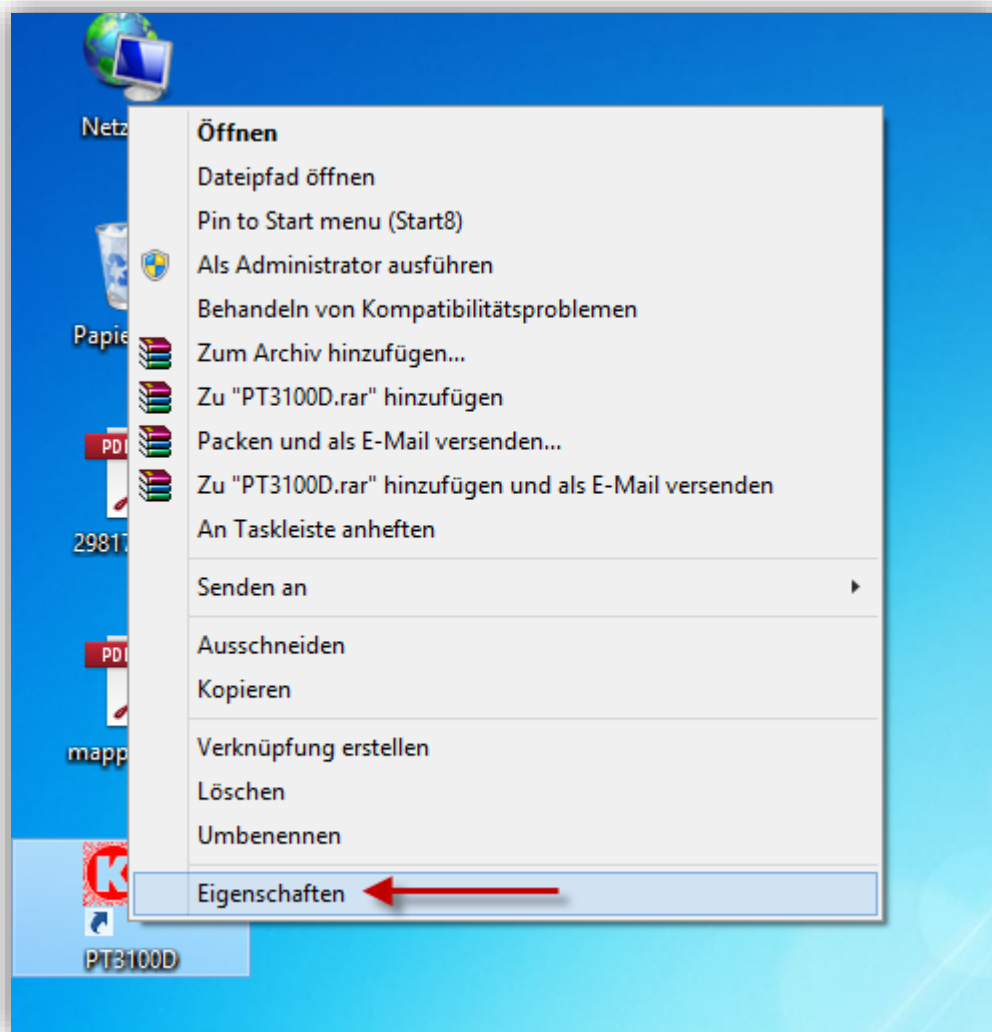
INSTALLATION INSTRUCTIONS

System	POLYTRON®		
Type	Windows 8.1 User Interface		
Version	2.0 / 01/07/2018		
Page	12	of	15



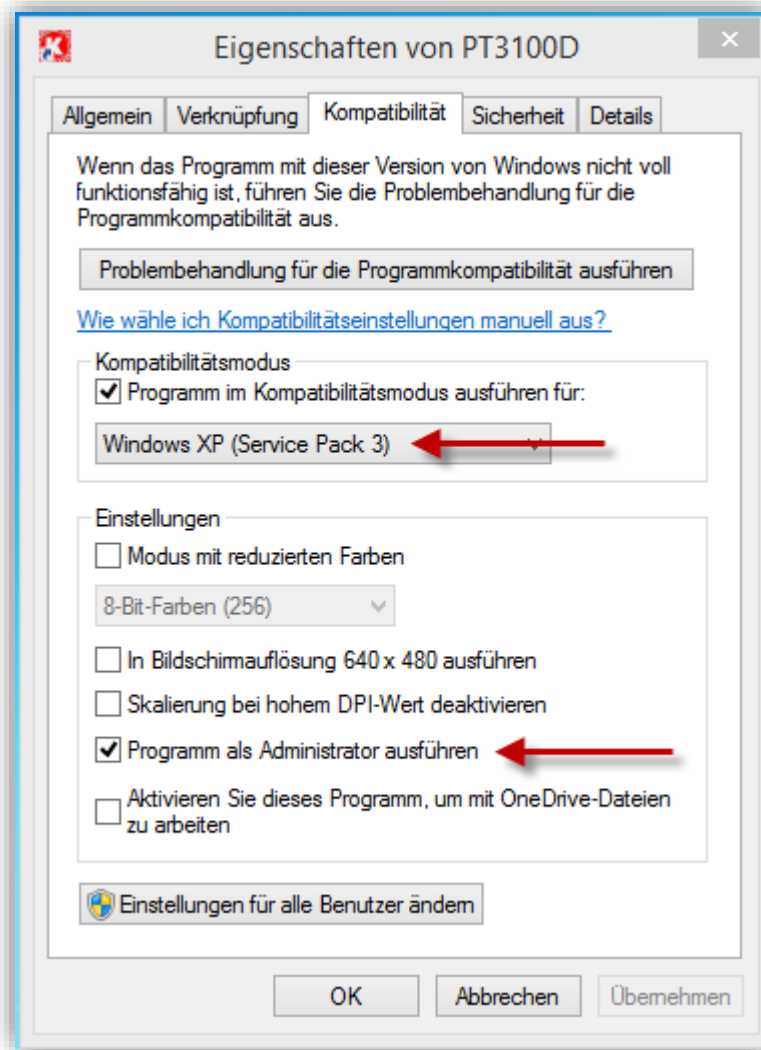
System	POLYTRON®		
Type	Windows 8.1 User Interface		
Version	2.0 / 01/07/2018		
Page	13	of	15

13. Right-click the shortcut on the desktop and select "**Properties.**"



System	POLYTRON®		
Type	Windows 8.1 User Interface		
Version	2.0 / 01/07/2018		
Page	14	of	15

14. Click on the **Compatibility** tab and enable or select the following options:

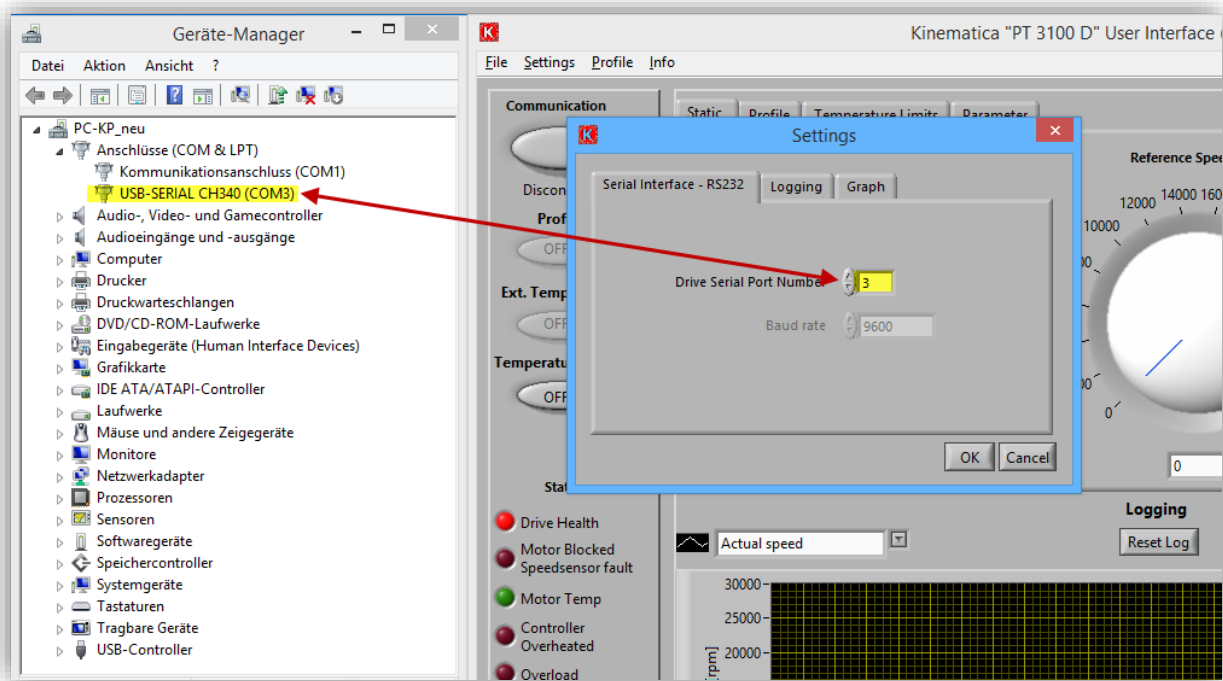


15. Confirm your changes with OK and launch the software

INSTALLATION INSTRUCTIONS

System	POLYTRON®		
Type	Windows 8.1 User Interface		
Version	2.0 / 01/07/2018		
Page	15	of	15

16. Check under **Settings** that you have entered the correct port number.



17. The dispersing device is connected with the software by clicking on **Communication**.